

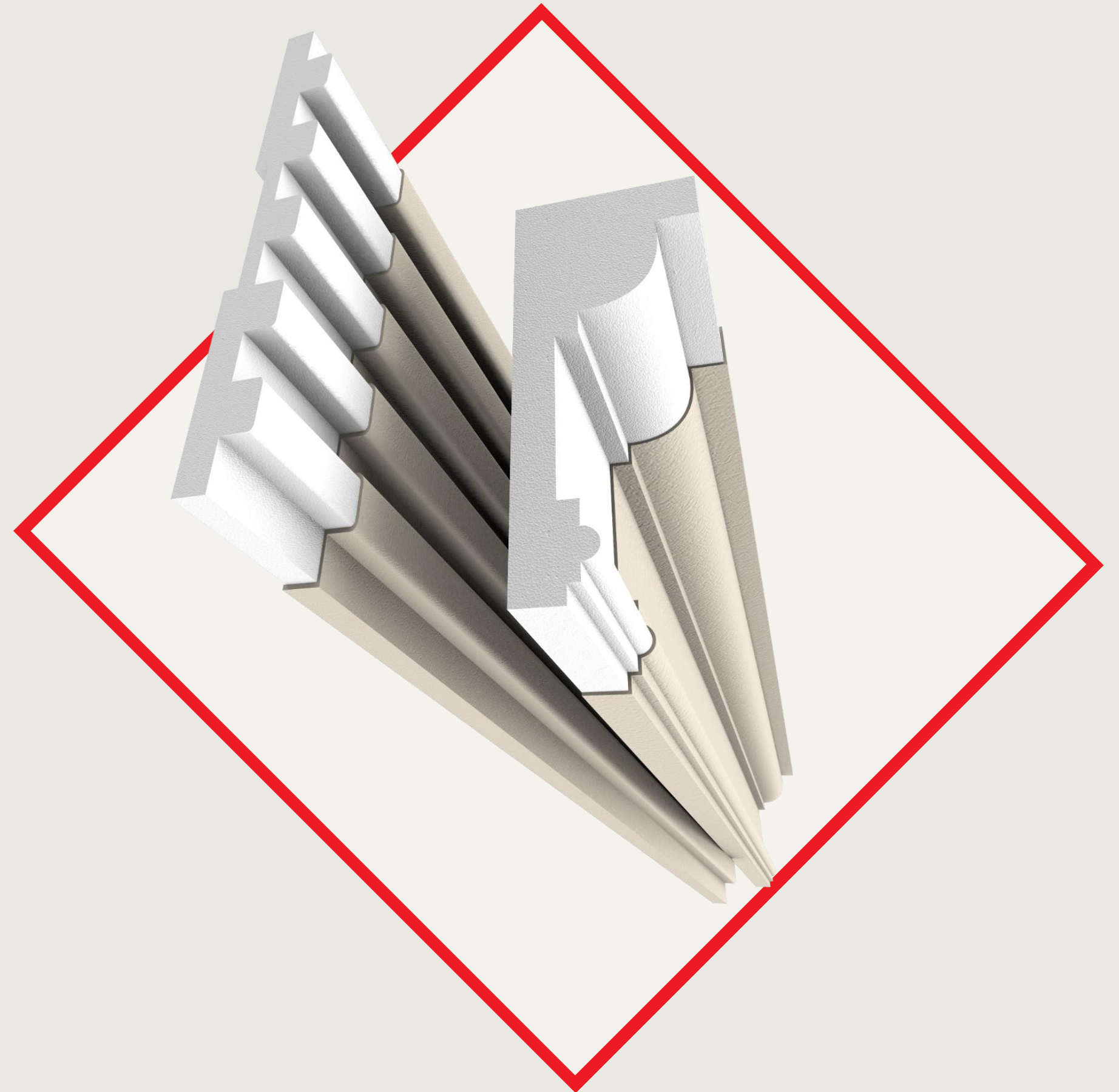
■ COATED EPS — A PRODUCT BY INSUTECH

Smart facade **cladding** solutions.

Acrylic-coated EPS for facades, cornices and architectural decoration — a lightweight, design-flexible substitute for GRC and GRP.

INSUTECH-EG.COM

+20 2 322 8200



A product **by** Insutech.

Cladeco® is a product developed by Insutech, engineered to meet the highest quality standards.

Insutech has been a trusted expert in building materials and insulation since 1987, offering a comprehensive range of construction solutions. With a strong focus on quality, Insutech operates its own in-house laboratories, holds international certifications, and exports to over 100 countries worldwide.

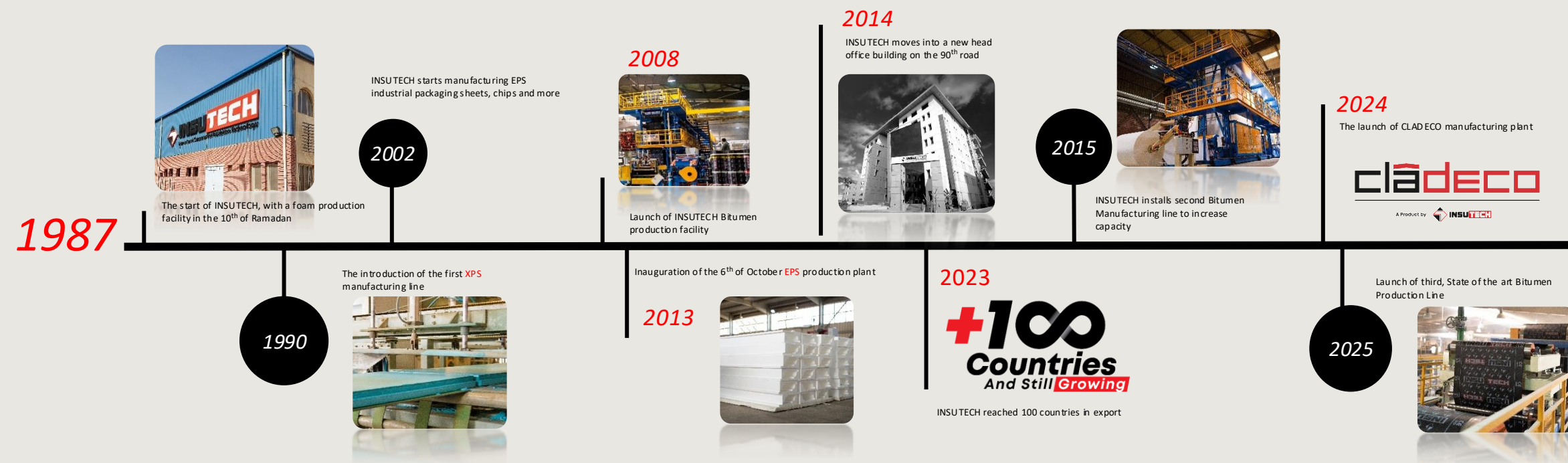


ISO 9001: 2015
ISO 14001: 2015
ISO 45001: 2018

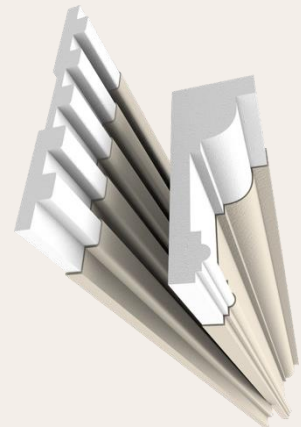


Timeline of Insutech.

Insutech has been a leading manufacturer of waterproofing and thermal construction solutions since 1987. Cladeco® is one of Insutech's latest innovations, launching in 2024



Insutech product range.



LINE 01

CLADECO

Continuous-line coated EPS panels and boards — ready-finished finished thermal insulation for façade systems.

800,000

M / YEAR



LINE 02

XPS

Extruded Polystyrene — high-compression rigid insulation board for wall, roof, and foundation insulation.

200,000

M³ / YEAR



LINE 03

MEMBRANE

Modified bituminous waterproofing membranes (APP & SBS), self-SBS), self-adhesive and anti-root variants for roofing and below-grade.

38M

M² / YEAR



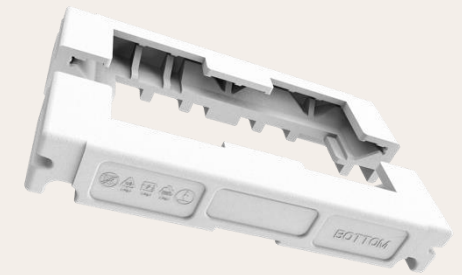
LINE 04

EMULSION

Cold-applied bituminous emulsions and primers — INSUCOAT® & INSUCOAT® & INSUGUARD® product families for waterproofing waterproofing systems.

15,000

TONNES / YEAR



LINE 05

EPS

Expanded Polystyrene block and shape-molded polystyrene — polystyrene — densities 7 to 40 kg/m³, custom shapes on demand.

8,000

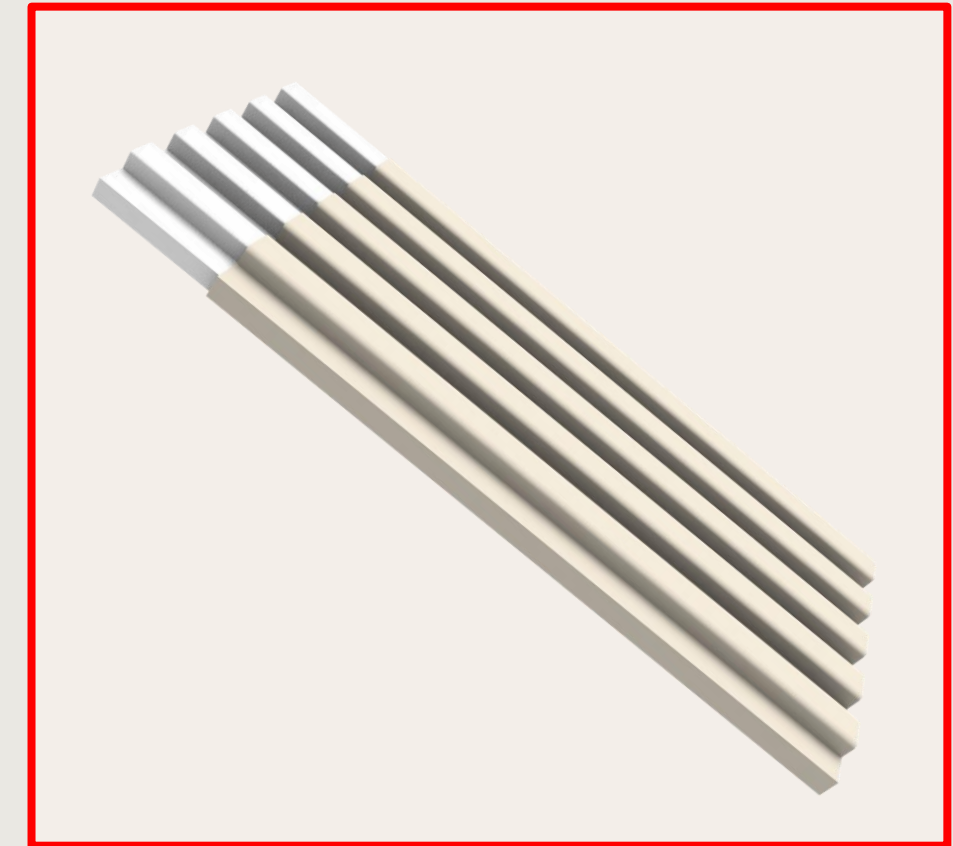
TONNES / YEAR

■ WHAT IS CLADECO

Cladeco **EPS**, engineered for efficient facades.

Cladeco® is a hard-coated expanded polystyrene system from Insutech — a lightweight, geometrically free architectural element for cornices, mouldings, columns, capitals and complete facade compositions. A direct substitute for GRC and GRP at a fraction of the weight and lead time.

CORE	EPS · 20–35 kg/m³	COATING	Acrylic coat
CAPACITY	800,000 m / year	SUBSTITUTE FOR	GRC · GRP · Stucco



◆ SPECIFIER BENEFITS · AT A GLANCE

- 01 **Up to 90% lighter than GRC — no facade load penalty**
- 02 **Fully customised geometry from technical drawings**
- 03 **Site-ready: no curing, no cracking, no rebar**
- 04 **Paintable, weather-stable, thermally efficient**
- 05 **Lead times measured in days, not weeks**

■ MATERIAL · CLADECO

Coated EPS system.

A self-finished facade system: structural EPS core, mineral-filled acrylic coating, integrated reinforcing without mesh. Cut to client's specs, pre-finished in factory, fixed on site.

EPS DENSITY	20 – 35 kg/m³
COATING	Acrylic coat · 2–4 mm
REINFORCEMENT	Acrylic with no mesh
PROFILE SIZE	Customizable
LENGTH	Customizable
FINISH	Paint-ready
FIRE CLASS	Customizable



◆ PERFORMANCE

- Weather-stable acrylic skin
- UV-resistant base finish
- Impact-resistant when coated
- Negligible water absorption
- Thermally insulating envelope
- Paintable in any masonry colour
- Compatible with EIFS systems
- Site-repairable with the same coating

■ BUILD-UP · TYPICAL CORNICE

See through a Cladeco profile.

A typical built-up section: structural EPS core, acrylic coat, finish layer.



NO STRUCTURAL LOAD

Bonded directly to the substrate; no shelf angles, lintels or anchors required for typical profiles.

SITE-JOINTED

Profiles meet at mitred joints, sealed with the same coating system — finish is a smooth jointless look.

REPAIRABLE

Impact damage is patched and re-coated using the standard system. No specialist trade required.



■ SPECIFIER & CONSULTANT VIEW

Benefits of Cladeco?

Architects and consultants choose Cladeco for its efficiency and ease of use. Using Cladeco®, they are able to integrate ambitious designs into their buildings— without compromising weight, cost or efficiency.

01 · WEIGHT

~90% LIGHTER

EPS core eliminates structural reinforcement requirements and lets you build designs you need without worrying about loads.

02 · GEOMETRY

ANY PROFILE

Hot-wire CNC and detailing to craft all shapes and designs — columns, cornices, facades, custom motifs.

03 · SPEED

Quick Installation

No custom molds to cast, no curing, and no on-site finishing. Components are pre-coated, and ready to install.

04 · COST

TOTAL-INSTALLED

Lower material, transport, lifting and labour costs versus GRC/GRP — also no special machinery or steel structures needed for installation.

40%

OVERALL COST CUT VS
TRADITIONAL MATERIALS
MATERIALS

~90%

LIGHTER THAN GRC

20–35

KG/M³ · EPS DENSITY

30%

AVERAGE ENERGY SAVINGS

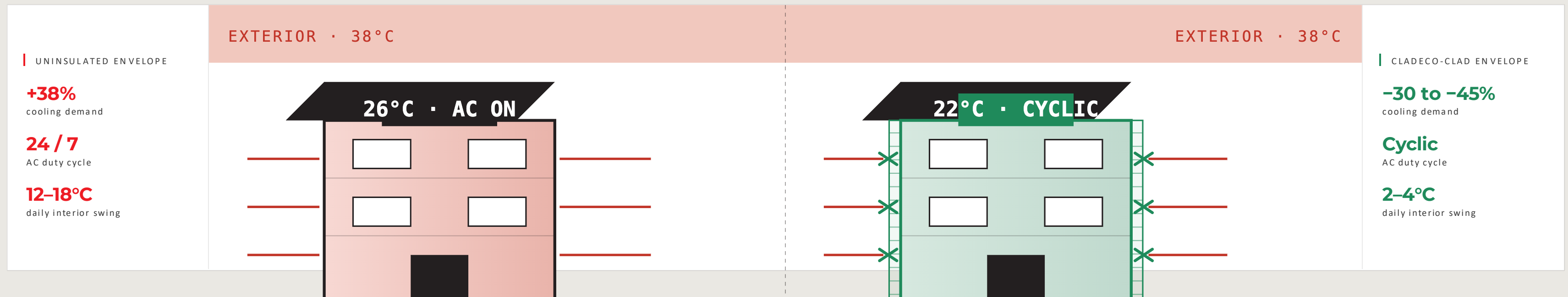
10 Year

WARRANTY

■ WHY THERMAL INSULATION MATTERS

Cladeco cuts down energy **bills.**

Up to **40%** of a building's cooling load enters through uninsulated walls and facades. A Cladeco-clad envelope reduces the heat and cool transfer through structures — for the life of the building. This causes a reduction in energy usage for heating/cooling of buildings, thus driving down energy costs for the homeowner.



FOR OWNER-OPERATORS

The decrease in energy usage compounds.

01

Hospitals

24/7 climate control with strict humidity and ward-temperature limits — every degree saved is recurring opex.

02

Malls & retail

Large glazed atria, high footfall. Insulated facade cuts chiller plant size and AC runtime over the lease term.

03

Schools & universities

Daytime occupancy aligns with peak solar gain. Stable classroom comfort without scaling AC capacity.

04

Hotels & offices

Room-by-room AC across hundreds of zones. Smaller equipment, meaningful annual electricity savings.

◆ SPECIFIER COMPARISON

Cladeco vs GRC & GRP.

For most architectural facade applications — cornices, sills, columns and decoration — Cladeco outperforms cementitious and glass-fibre alternatives across every metric a specifier cares about.

STANDARD

Lower envelope dead-load

STANDARD

Faster installation

METRIC	CLADECO	GRC	GRP
DENSITY	20-35 kg/m ³	~1,900 kg/m ³	~1,500 kg/m ³
WEIGHT PER LM (TYP.)	2-4 kg/m	35-60 kg/m	15-25 kg/m
GEOMETRY FREEDOM	CNC · any profile	Mold-bound	Mold-bound
LEAD TIME	Days	4-8 weeks	3-6 weeks
SITE HANDLING	Hand-lift, no crane	Crane / rigging	2-person lift
THERMAL CONTRIBUTION	Insulating	Cold-bridge	Negligible
CRACK RISK OVER TIME	Coating-only	Hairline / structural	UV embrittlement

POINT-BY-POINT COMPARISON

Cladeco vs GRC.

Fifteen specifier-level criteria, side-by-side. Cladeco wins on weight, speed, efficiency and joint behaviour — at **1×** the cost of GRC's **1.25×**.

CLADECO	GRC
LIGHTER, FASTER, SAFER	HEAVY, MOLD-BOUND, SLOW
Fire Resistant -EPS core + acrylic hardcoat. 1× cost. CNC mass-production. Crack-resistant joints. Easy hand-install.	1,700–2,250 kg/m ³ . 1.25× cost. Mold casting. Crane-handled. Subject to thermal cracking at joints.

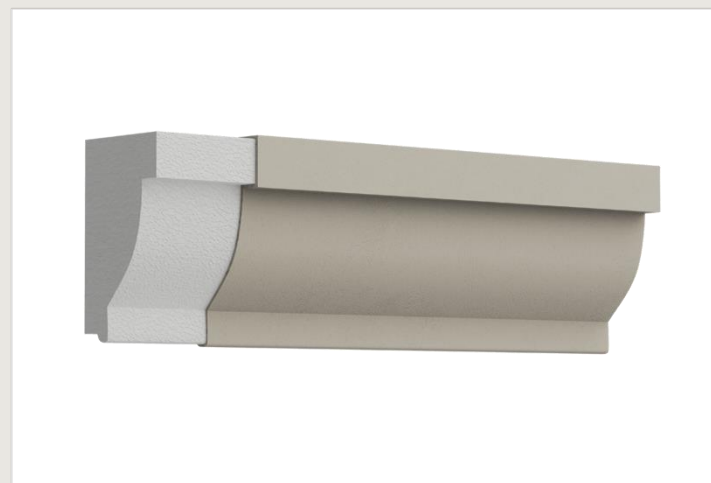
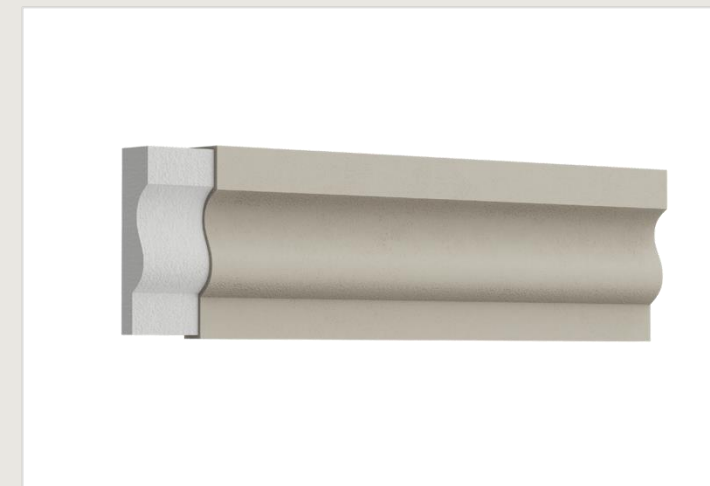
WEIGHT ~70× LIGHTER THAN GRC	COST -20% VS GRC BASELINE (1.25×)	THERMAL CONDUCTIVITY 0.032 W/CM ² ·°C VS 0.6–0.75
--	---	--

#	POINT OF COMPARISON	CLADECO	GRC
01	COST	1×	1.25×
02	WEIGHT	EPS 24–30 kg/m³ + acrylic 5–8 kg/m²	1,700–2,250 kg/m ³
03	INSTALLATION	Easy · cement-base adhesive & fasteners	Difficult · steel structure, crane-lifted
04	PRODUCTION SPEED	CNC + acrylic coat = mass production	Mold + cast = limited production
05	THERMAL INSULATION	0.032W/cm²·°C	0.6–0.75 W/cm ² ·°C
06	WATER ABSORPTION	2%	6–11%
07	FIRE RESISTANCE	Non-combustible · class C-s2,d0 (EN 13501-1)	Non-combustible · does not ignite or char
08	CRACKING RESISTANCE	High durability	Subject to cracks
09	CHEMICAL ATTACK	Resistant · corrosion & rot proof	Not resistant in aggressive environments
10	CROSS SECTION	Is sealed at the joints to create seamless finish	Air-filled · cracks at thermal joints
11	PRODUCTION & DESIGN	Unlimited shapes & designs	Mold-bound · limited geometry
12	LARGE SECTIONS	Produced in parts · light, easy install	Heavy · needs lifting equipment
13	SAFETY ON SITE	Limited restrictions during & after install	High restrictions · falling-piece risk
14	FINAL COATING	Receives paint or dry-mix layers	Receives paint or dry-mix layers
15	JOINTS	FR-thermal-stable · acrylic seals match shell	Cracking at joints from thermal effect

■ UNLIMITED DESIGNS
DESIGNS

A look at some standard **Cladeco pieces.**

Here are some standard Cladeco pieces used for decorative elements and facades. Pieces are custom ordered with the size and specs needed for each specific project.



■ CLADECO USES

Cladeco applications.

From corniches and columns to unique facade patterns — Cladeco produces the full range of architectural elements, cut from your drawings and delivered ready for installation.

01 CORNICES

Continuous parapet and string-course profiles that crown facades with crisp, classical silhouettes.

02 FACADE CLADDING

Lightweight insulating panels that wrap entire elevations in a clean, durable finish.

03 WINDOW & DOOR PROFILES

Architraves, sill bands and door surrounds cut to any classical or modern profile.

04 COLUMNS

Engaged and free-standing columns with plinths and Doric, Ionic or custom capitals.

05 FACADE SHAPES & PATTERNS

Quoins, rustication and decorative motifs that bring rhythm and texture to flat elevations.

06 CUSTOM SHAPES & PROFILES

Crests, medallions, friezes and unique profiles cut to your exact drawings.



■ INSTALLATION

How to install Cladeco.

A clear short video showcasing the ease of installation for Cladeco products.



■ CLADECO PROJECTS Reference

Cladeco projects.

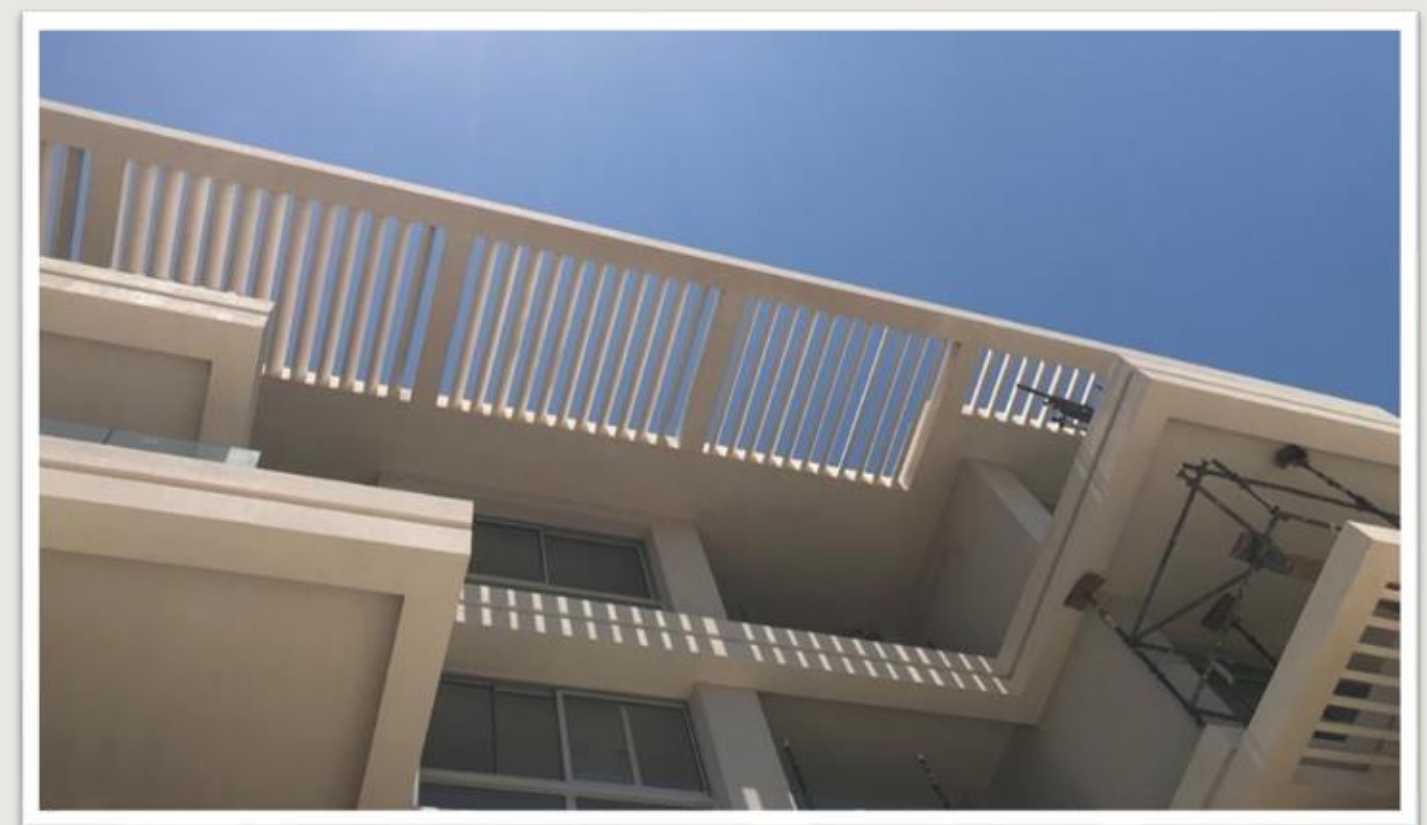
A look at some of our previously completed projects.

Mountain View



■ CLADECO PROJECTS Reference
Reference

Marassi Emaar



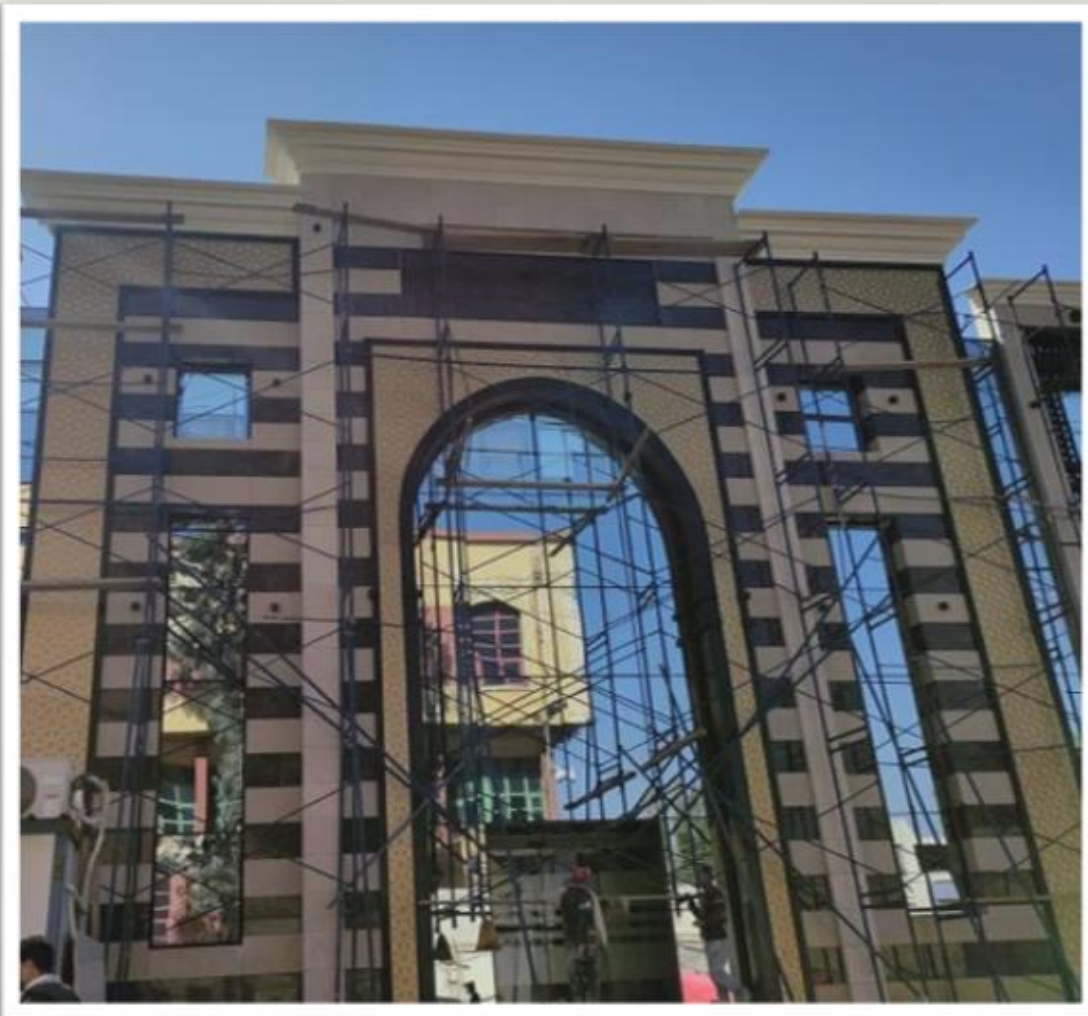
■ CLADECO PROJECTS Reference

El Alamein Hospital



■ CLADECO PROJECTS Reference

Police Press Darrasa



Village West/Dorra



R05 / New Capital



■ Quality and Assurance

Quality by design.

Cladeco uses Insutech's Quality Management System — ISO-certified, audited to multinational standards, planned and improved through the PDCA cycle.

■ **Specifier-grade documentation**

Drawings, profiles, samples and submittal packs issued to consultant standard before production starts.

■ **In-house laboratory**

Coating thickness, adhesion, thermal conductivity, and density verified per batch before dispatch.

■ **Integrated standards**

Highest international standards for all quality tests and checks

■ **Continuous improvement**

Performance reviewed every cycle; corrective actions close every loop, every project.

◆ PLAN · DO · CHECK · ACT

THE PDCA CYCLE

P · PLAN

QUALITY PLANNING

Define objectives and how they will be measured.

D · DO

QUALITY CONTROL

Monitor samples against thresholds in the plan.

PDCA

C · CHECK

QUALITY ASSURANCE

Evaluate overall performance against expectations.

A · ACT

QUALITY IMPROVEMENT

Apply corrective actions, update plans, raise the bar.

■ CERTIFIED & ACCREDITED

A mix of our **certificates.**

Insutech is accredited across environmental, occupational safety and product conformity standards — in both source and destination markets. Cladeco is supplied under the same QMS umbrella.

CE 0120 ■

ISO 9001 ■

ISO 14001:2004 ■

ISO 18001 ■

SGS ■

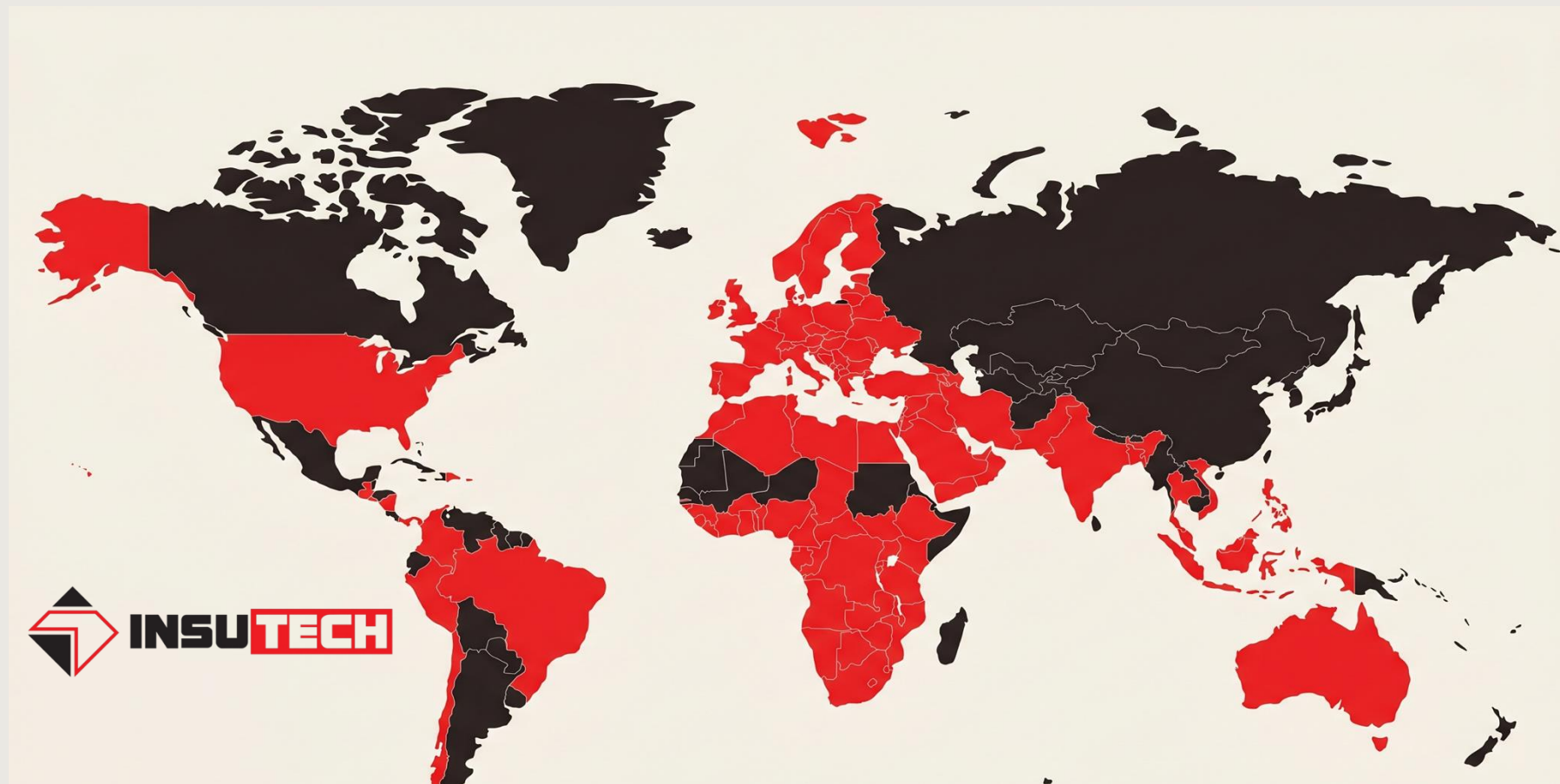
SONCAP ■

NRCA ■

EIFS APPROVED ■

■ GLOBAL FOOTPRINT

Shipping to five continents.



◆ REGION
EUROPE
23 countries

◆ REGION
MENA & GCC
16 countries

◆ REGION
AFRICA
35 countries

◆ REGION
ASIA & OCEANIA
15 countries

◆ REGION
N. & C. AMERICA
10 countries

◆ REGION
S. AMERICA
8 countries

■ A PRODUCT BY INSUTECH · SINCE 1987

Thank you.



PHONE

+20 2 322 8200

INSUTECH · Egypt

EMAIL

info@insutech-eg.com

Sales & Enquiries

WEB

www.insutech-eg.com

Cladeco product catalogue online

HEAD OFFICE

New Cairo · Egypt

77, S-Teseen St., 5th Settlement